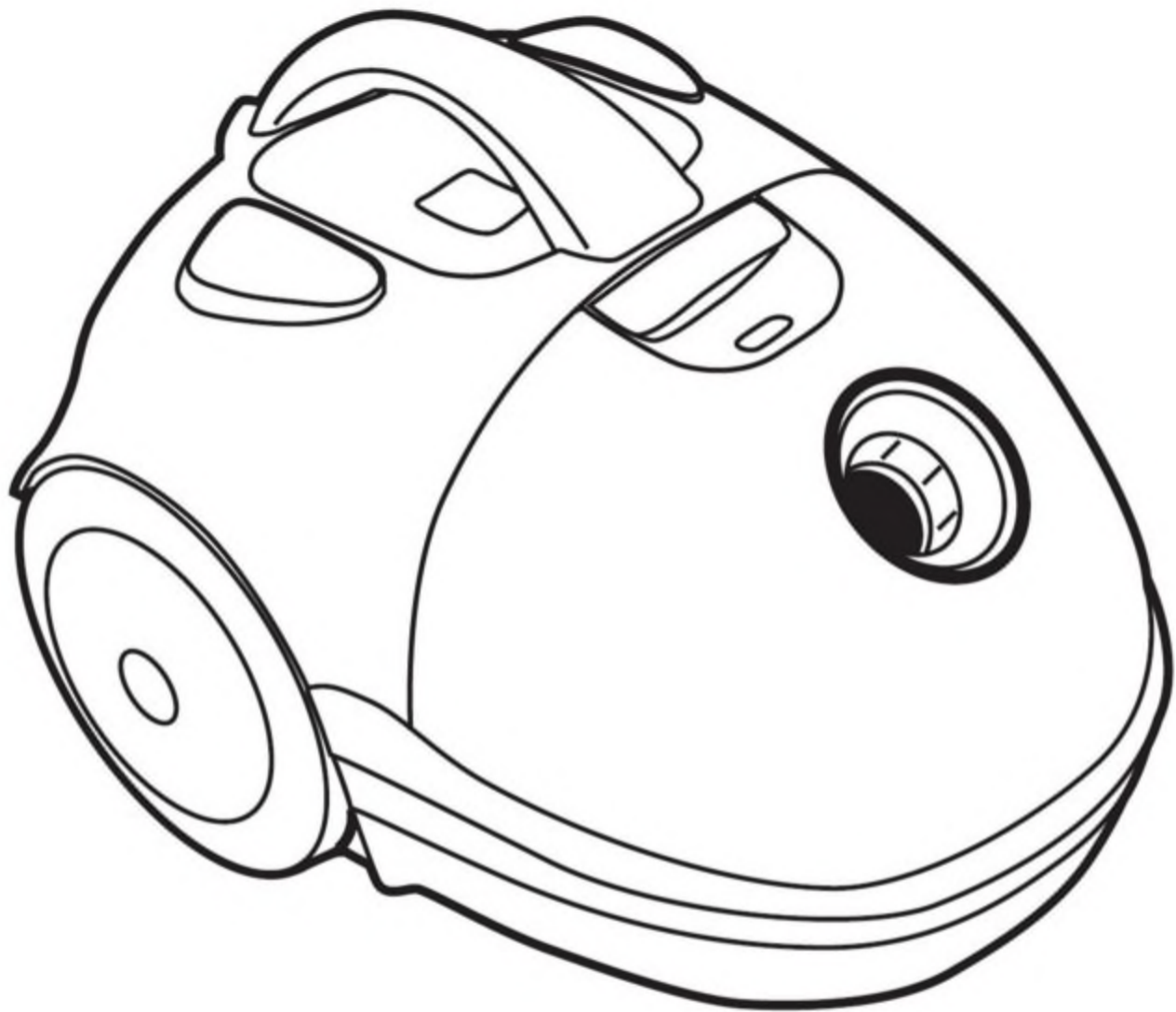
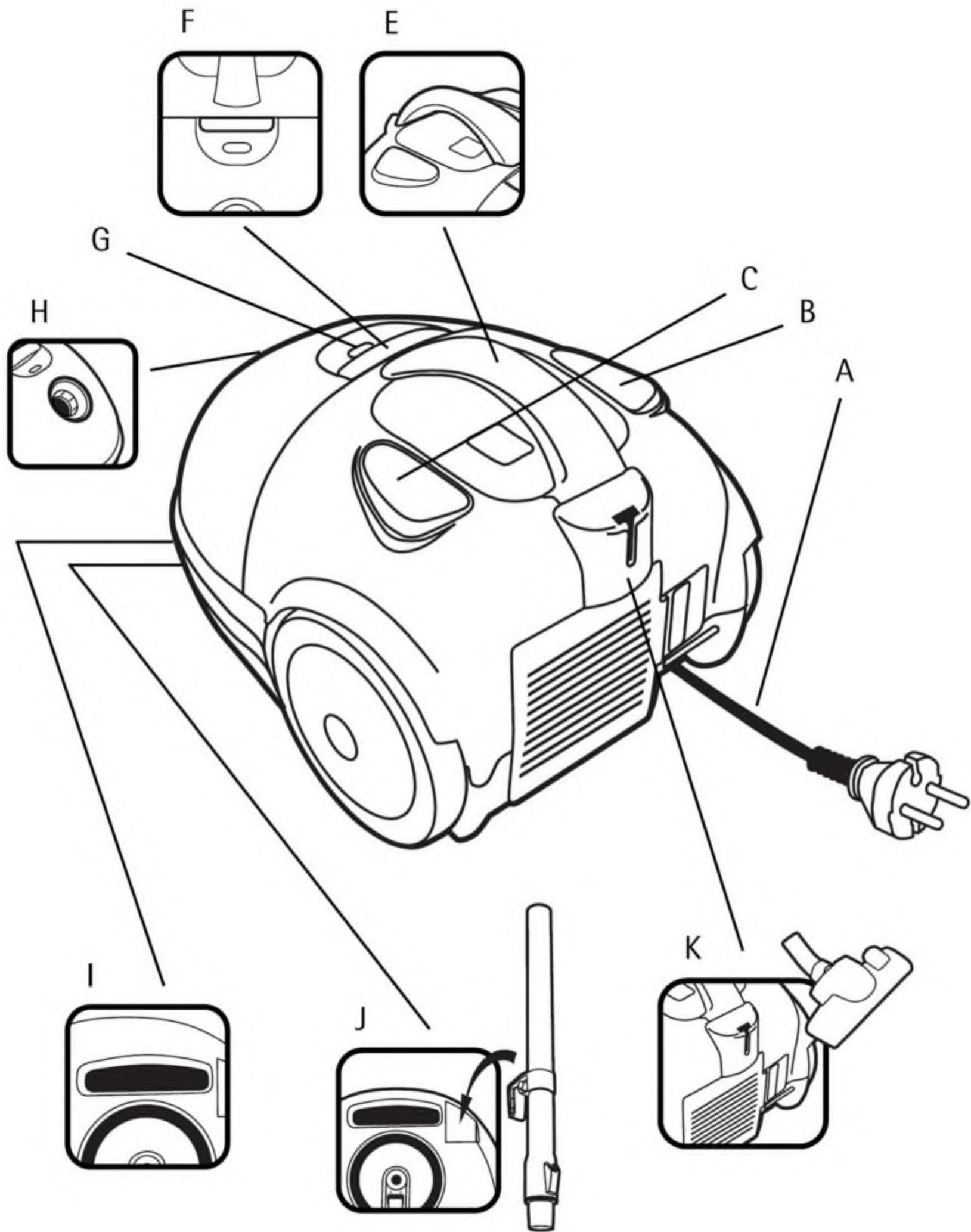


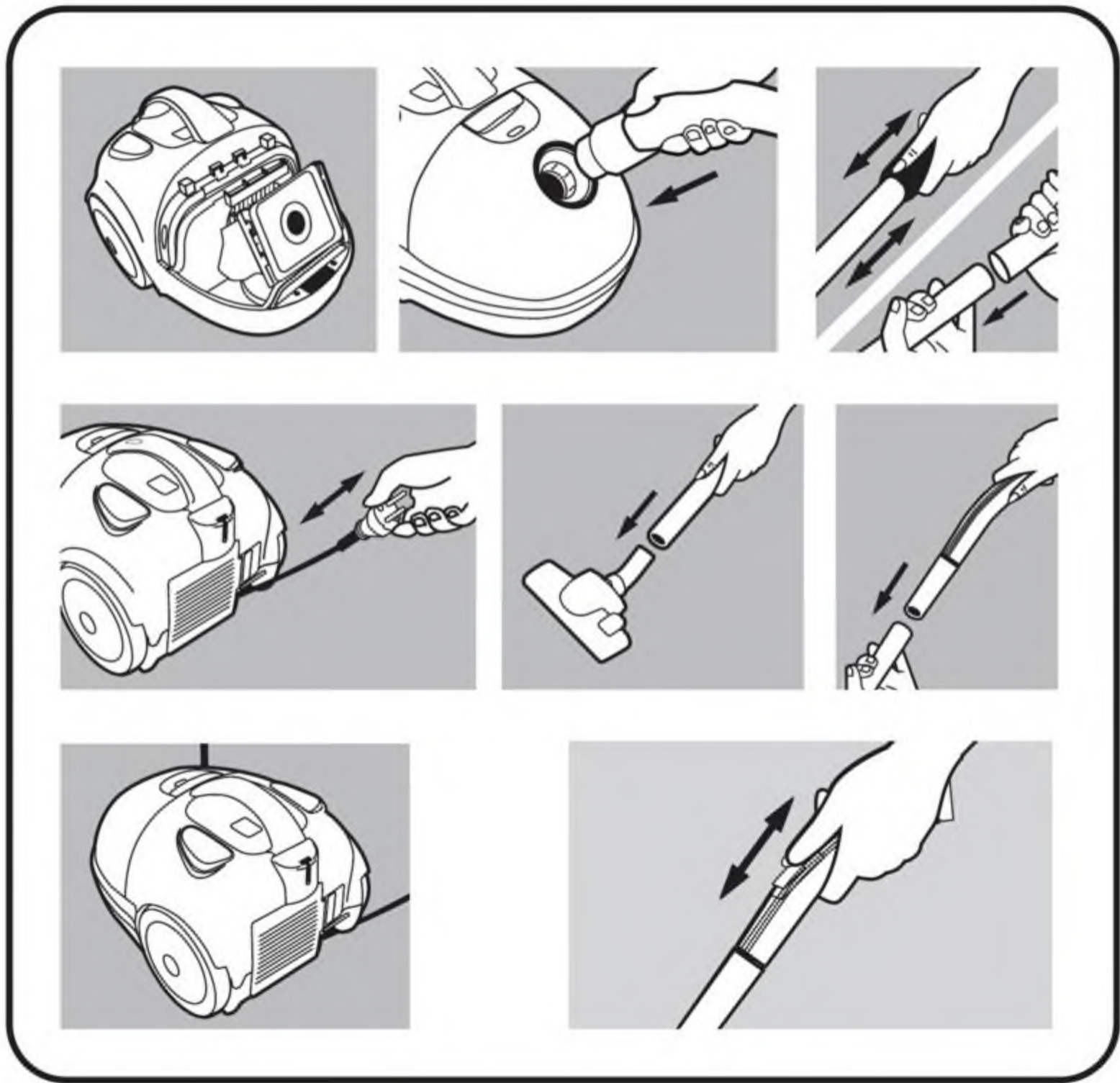
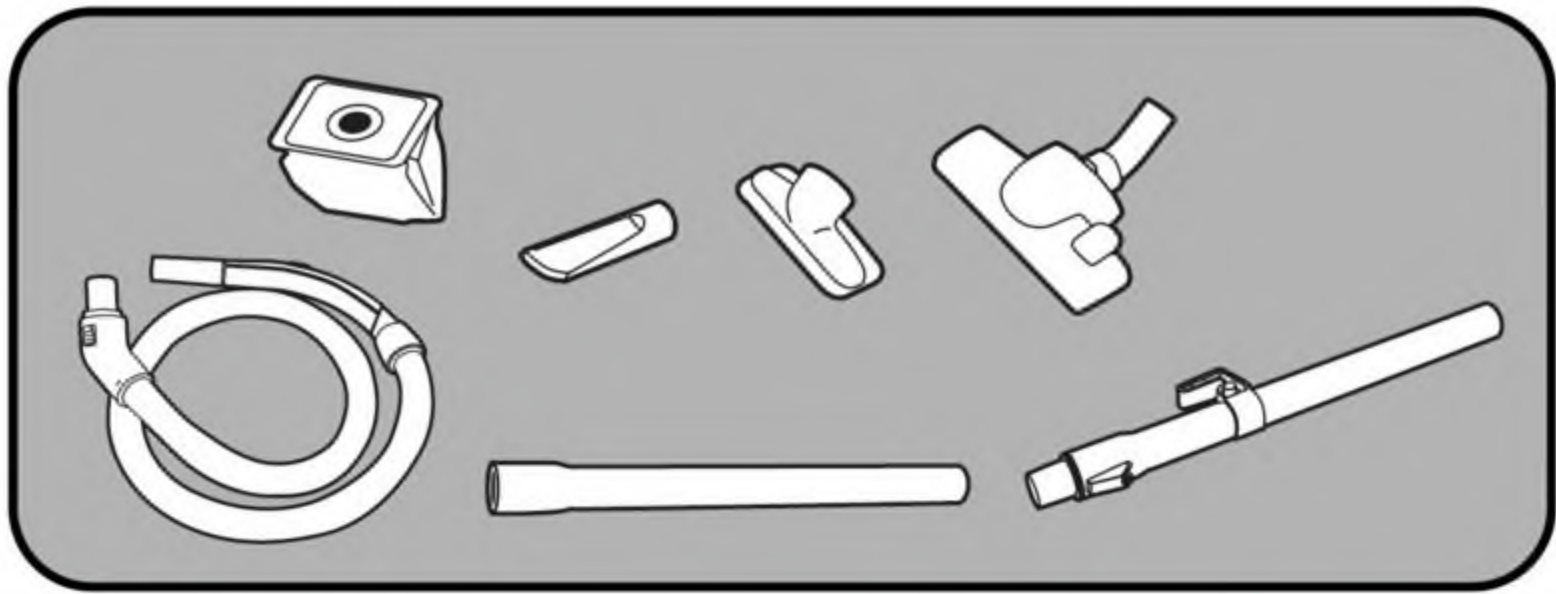
# **Electrolux**

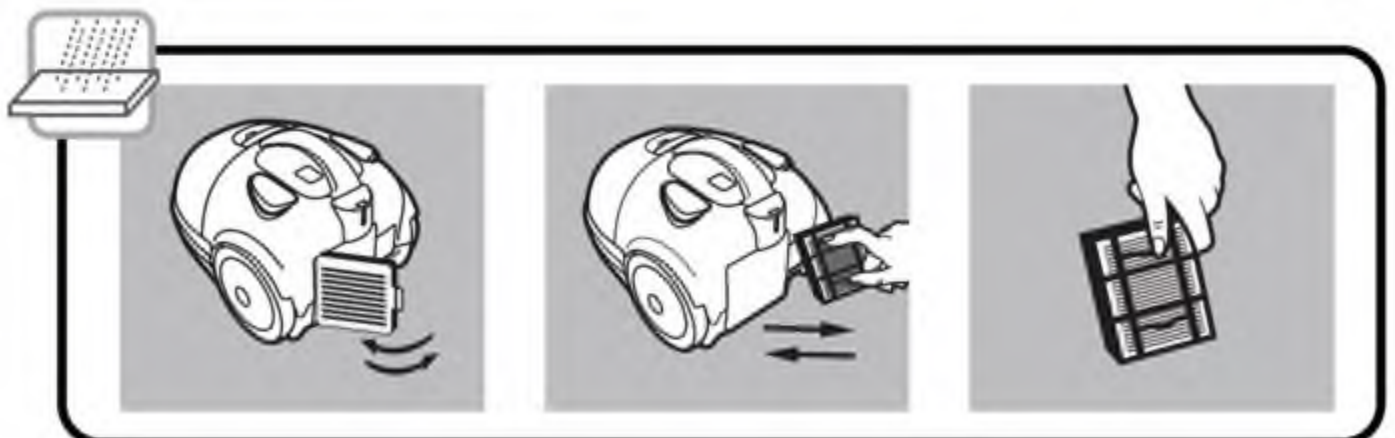
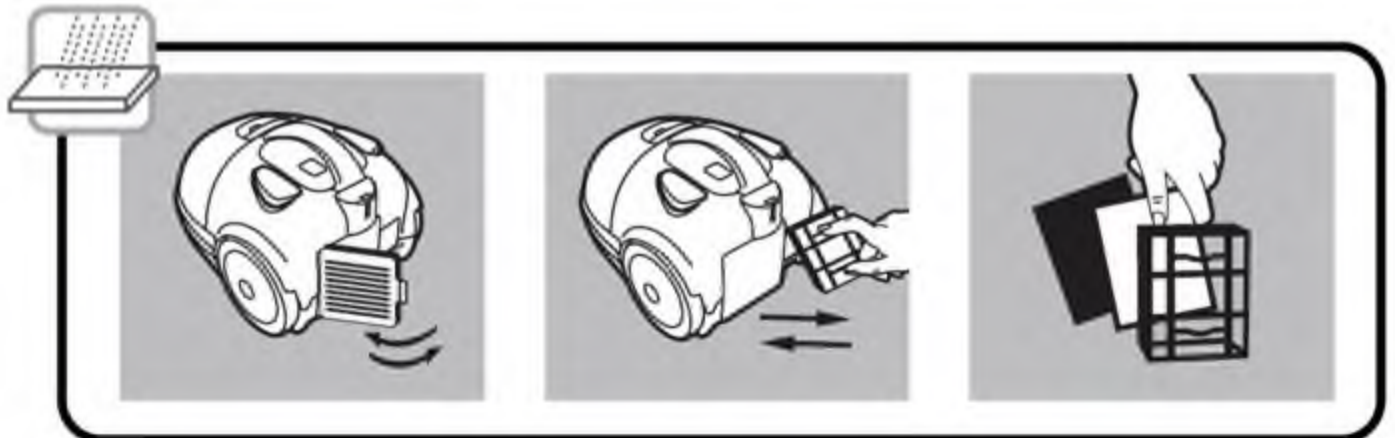
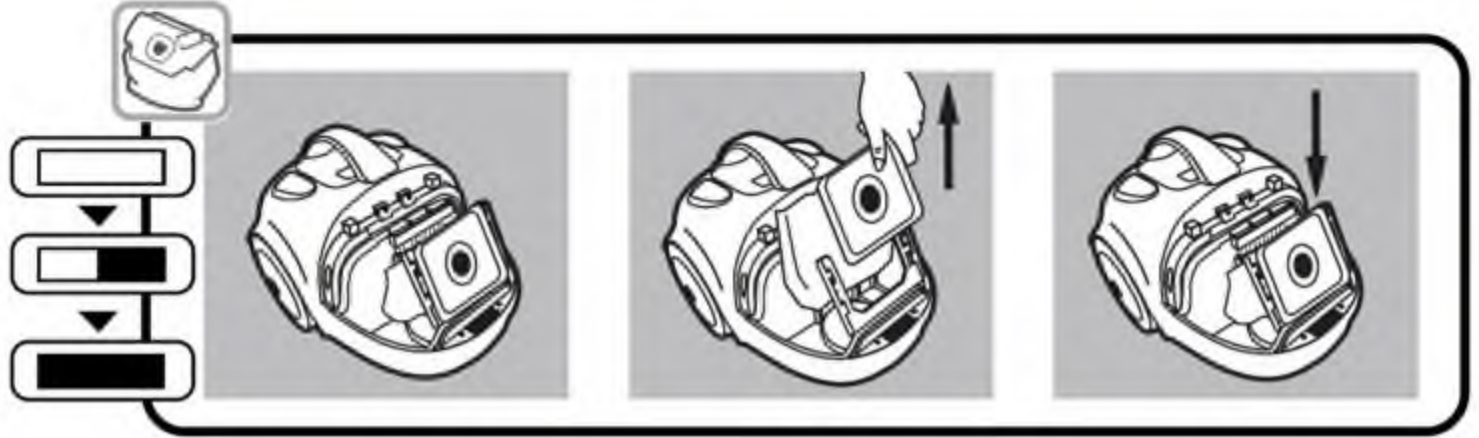
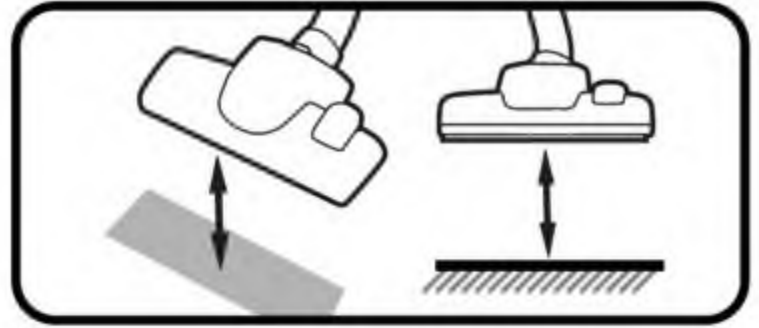
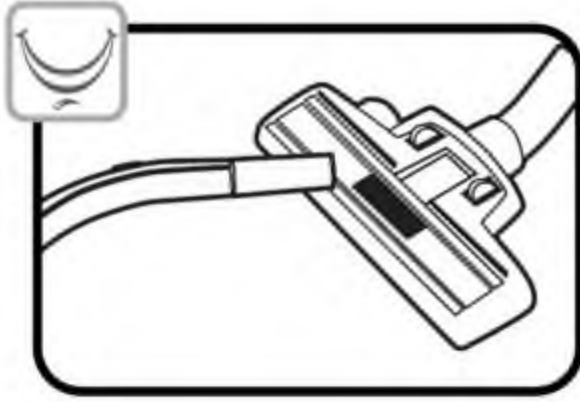


Vacuum Cleaner iCute (Z209)  
Operating Instructions

<b>Dear Customer</b> .....	6
<b>Features</b> .....	6
<b>Accessories</b> .....	6
<b>Safety instructions</b> .....	6
<b>Getting Started</b> .....	6
<b>Getting the best results</b> .....	7
<b>Dust bag indicator and changing the dustbag</b> .....	7
To change the dustbag .....	7
We recommend the dustbag is changed .....	7
<b>Changing the filters</b> .....	7
To clean Motor Protection filter .....	7
To change Micro filter .....	7
<b>Troubleshooting</b> .....	7







## Dear Customer

Thank you for choosing an Electrolux Vacuum cleaner. To ensure total satisfaction, read this Instruction book carefully.

## Features (see page 3)

- A Mains cable
- B Cable rewind button
- C On/off button
- E Multifunction handle
- F Cover release catch for dustbag compartment
- G Dustbag indicator
- H Hose connection
- I Carrying Handle
- J Storage slot for floor nozzle and extension tubes when not in use
- K Storage slot for floor nozzle and extension tubes when in use



## Accessories (see page 4)

- Dust bags
- Extension tubes (x2)
- Swivel hose and handle with manual suction control
- Combination carpet/hard floor nozzle
- Narrow crevice nozzle
- Upholstery nozzle



## Safety instructions

The cleaner is for domestic use only and has been designed to ensure maximum safety and performance.

Please follow these simple precautions:

- The cleaner is double-insulated so it must not be earthed.

- The cleaner is only to be used by adults. Young children or infirm persons should be supervised to ensure that they do not play with the appliance.
- Always store in a dry place.
- Do not use to pick up liquids.
- Avoid sharp objects.
- Do not pick up hot cinder or lighted cigarette ends.
- Do not use near flammable gases.
- Avoid tugging on the mains cable and check cable regularly for damage.
- Note: Do not use your cleaner with a damaged cable. If damaged the cable should be replaced at an Electrolux Service Centre.
- The Plug must be removed from the socket-outlet before cleaning or maintaining the appliance.
- All service and repairs must be carried out by authorised Electrolux service staff.



## Getting Started (see page 4)



Check the dustbag is in place.



Insert the hose until the catches click to engage. (Press catches inwards to release).



Attach tubes or to the hose handle and floor nozzle by pushing and twisting together. (Twist and pull apart to dismantle).



Extend the cable and connect to mains. The cleaner is fitted with cable rewind, ensure cable is not twisted before use. (Press foot pedal to rewind. Note: Please hold the plug to prevent it striking you or the machine).



Press the On/Off button to activate the cleaner.



Suction can be regulated on the hose handle by opening/closing the aperture.



## Getting the best results (see page 5)

- Carpets: Use the floor nozzle with the lever in horizontal position.
- Hard floors: Use the floor nozzle with the lever in vertical position.
- Loose rugs/curtains/lightweight fabrics: Reduce the suction power. Use the floor nozzle for loose rugs and the upholstery nozzle for curtains, cushions etc.
- Confined areas: Use the crevice nozzle for crevices, corners and radiators.






## Dustbag indicator and changing the dustbag (see page 5)

For peak performance the dustbag must be changed when full. If the dustbag should accidentally get broken in the cleaner, take cleaner to an Electrolux Service Centre for cleaning. Check the dustbag regularly and replace when necessary. The dustbag indicator window will gradually turn red when filling and completely red when full.

To check the dustbag, the cleaner must be switched on, with all attachments connected and off the floor.

The dustbag full indicator may signify that the bag is blocked (occasionally caused by very fine dust) which will cause loss of suction and may result in overheating. If this occurs change the dustbag even if it is not full.

### To change the dustbag

-  Release catch and swing back lid before removing the dustbag.
-  Remove the dustbag.
-  Insert new dustbag by fitting the bag slots over holders.

We recommend the dustbag is changed

- after using a carpet cleaning powder
- if there is a bad smell from the cleaner, then you should also change the filter
- Note: Use only Electrolux original dustbags and filters (ref E66n).

### Dust bag safety device:

To avoid damaging the cleaner do not use it without a dustbag. A safety device is fitted which prevents the cover closing without a dustbag. Do not attempt to force cover shut.






## Changing the filters (see page 5)

There are two filters inside your cleaner. Never use the cleaner without the filters in place.




### To clean Motor Protection filter

The Motor Protection filter should be cleaned when dirty.

-  Release catch, remove the lid and the filter.
-  Wash the filter in warm water.
-  Allow to dry and re-insert the clear filter. Close the lid.

### To change Micro filter

The Micro filter should be changed with every fifth dustbag.

-  Release catch, open the filter cover and remove filter with grill.
-  Take the filter out of the grill.
-  Insert new filter into the grill, put it back into the cleaner. Close the cover.

## Troubleshooting

- Power: If the electric power does not come on, disconnect from mains and check plugs, cable and fuses where appropriate.
- Blockages/dirty filters: The cleaner may switch itself off in the event of a severe blockage or excessively dirty filter(s). In such cases, disconnect from mains and allow to cool for 20-30 minutes. Clear blockage and/or replace filter(s) and restart. The clearing of blocked hoses is not covered by the guarantee. Please also see Electrolux additional information towards the back of this booklet.
- Water: If water is sucked into the cleaner the motor must be changed at an Electrolux Service Centre.

## MALAYSIA

Electrolux Home Appliances Sdn Bhd  
(175660T)  
Axis Plaza, Level 2.  
No. 5 Jalan Penyair U1/44,  
Seksyen U1, 40150 Shah Alam,  
Selangor Darul Ehsan, Malaysia.  
Customer Care service : 1-300-88-1122  
(local rate charge)  
Fax : (+603) 5569 3979  
E-mail : [customer.care@electrolux.com.my](mailto:customer.care@electrolux.com.my)  
Website : [www.electrolux.com.my](http://www.electrolux.com.my)

## SINGAPORE

Electrolux S.E.A Pte Ltd  
10 Toh Guan Road  
#07-01 TT International Tradepark  
Singapore 608838  
Customer Care service : (+65) 6761 6200  
Fax : (+65) 6792 5975  
E-mail : [customer-care.sin@electrolux.com](mailto:customer-care.sin@electrolux.com)  
Website : [www.electrolux.com.sg](http://www.electrolux.com.sg)

## THAILAND

Electrolux Thailand Co. Ltd  
Electrolux Building  
1910 New Petchburi Road, Bangkok,  
Huay Kwang,  
Bangkok 10320 Thailand.  
Customer Care service : (+66) 2718 0200  
Fax : (+66) 2718 0048  
E-mail : [homecare@electrolux.co.th](mailto:homecare@electrolux.co.th)  
Website : [www.electrolux.co.th](http://www.electrolux.co.th)

## INDONESIA

P.T. Electrolux Indonesia  
Wisma Staco, 8th Floor,  
Jalan Casablanca Kav. 18,  
Jakarta 12870, Indonesia.  
Customer Care service : +62-21-632 8025, 633 1350  
Fax : +62-21-634 8079  
E-mail : [eluxcustomer@cbn.net.id](mailto:eluxcustomer@cbn.net.id)  
Website : [www.electrolux.co.id](http://www.electrolux.co.id)

## PHILIPPINES

Electrolux Philippines Inc  
7th Floor King's Court Building 1,  
2129 Chino Roces Avenue,  
Makati City, Philippines.  
Customer Care service : (+63-2) 825 9908 to 09  
Fax : (+63-2) 825 9917  
E-mail : [customer.care@electrolux.com.ph](mailto:customer.care@electrolux.com.ph)  
Website : [www.electrolux.com.ph](http://www.electrolux.com.ph)

## VIETNAM

Electrolux Vietnam  
133 Thai Ha,  
Dong Da, Hanoi, Vietnam.  
Customer Care service : 84-4-857 4882  
Fax : 84-4-537 0601  
E-mail : [customer.care@electrolux.com.vn](mailto:customer.care@electrolux.com.vn)

## HONG KONG

Electrolux (Far East) Ltd  
Room 4313-18 Metroplaza Tower 1,  
No 223 Hing Fong Road,  
Kwai Chung, Hong Kong.  
Fax : +852 2481 0123  
Website : [www.electrolux.com.hk](http://www.electrolux.com.hk)



**From the Electrolux Group.**

*The world's No.1 choice.*